



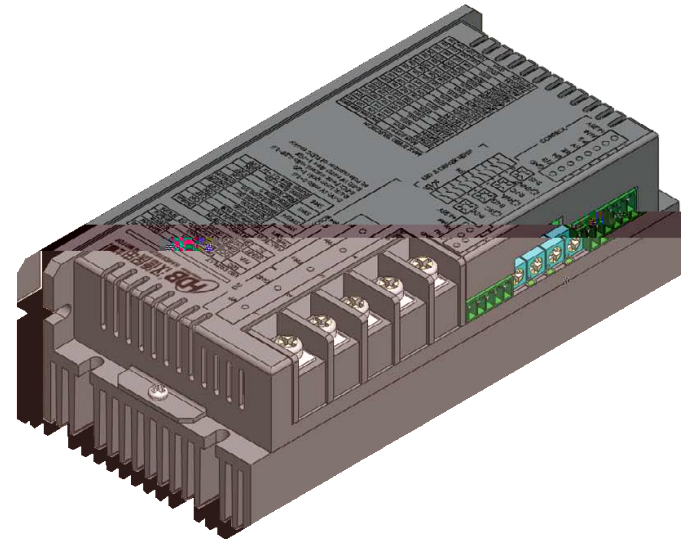
■ 技术源自德国  
■ 驱动民族工业

## DBL-3650H

直流无刷电机驱动器

使用手册

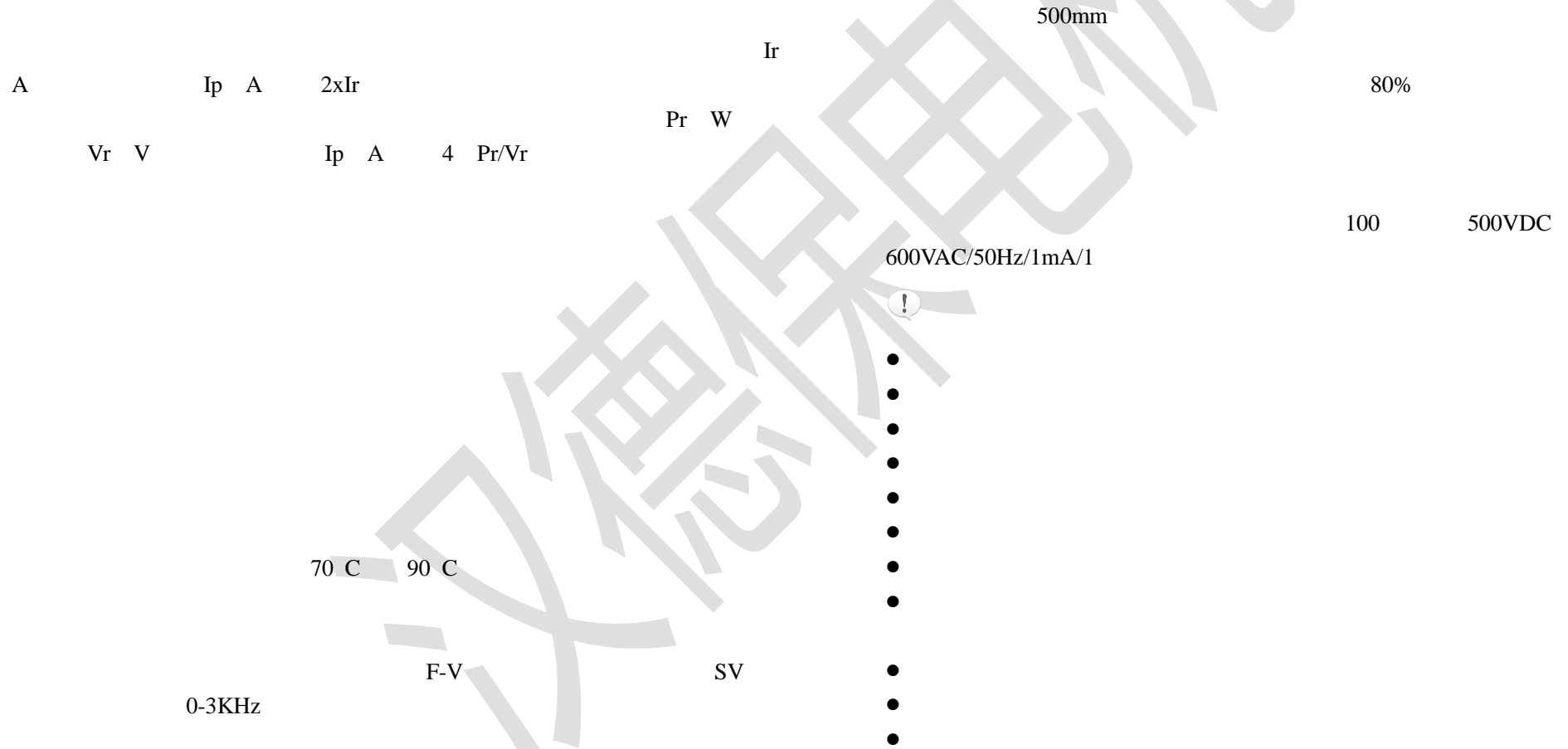
以匠心质造，驱动民族工业



版权所有 不得翻印

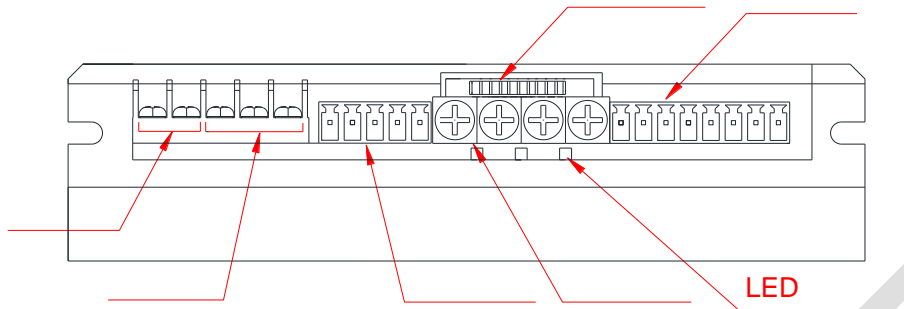
【使用前请仔细阅读本手册，以免损坏驱动器】

# DBL-3650H



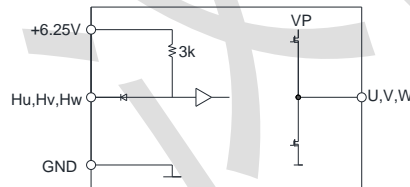
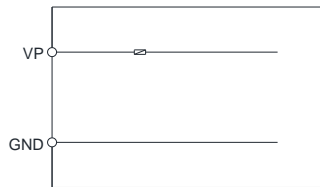
文德保电

	27	36	45	VDC
	-	-	25	A
	-	800	-	W
	-	15	-	KHz
	-3		+3	%
	0	-	100	%
	25	-	100	%
	-	6.25	-	V
	-	-	10	mA
	5	10	10	K
	-	27	-	VDC
	-	45		



**1 DC**

1	<b>VP</b>		<b>+27VDC~+45VDC</b>
2	<b>GND</b>		<b>0V</b>
3	<b>U</b>	U	
4	<b>V</b>	V	
5	<b>W</b>	W	



**2**

1	<b>GND</b>		
2	<b>Hu</b>	Hu	
3	<b>Hv</b>	Hv	
4	<b>Hw</b>	Hw	
5	<b>+6.25V</b>		10mA

**3)**

1	<b>GND</b>		
2	<b>F/R</b>		
3	<b>EN</b>		
4	<b>BK</b>		
5	<b>SV</b>		
6	<b>PG</b>		OC (30V/10mA max)
7	<b>ALM</b>		
8	<b>+6.25V</b>		10mA

**4)LED**

SC

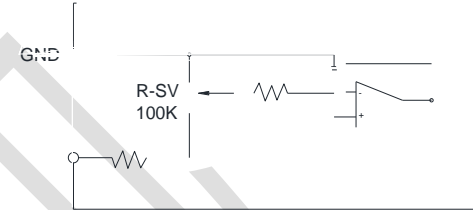
P/A /

- 1)
- 2)
- 3)

文德

**SV**

SV +1~ +5V  
 0 ~ +5V +6.5V ,0V +5V



**1** **R-SV**  
 SV +6.25V(Pin8) R-SV  
 SV 5V, R-SV 0.8  
 R-SV 0 ~ 0.8  
 R-SV 0 1.0 SV  
 +6.25V 0.25W 27K  
 R-SV (50uS)

**PG**

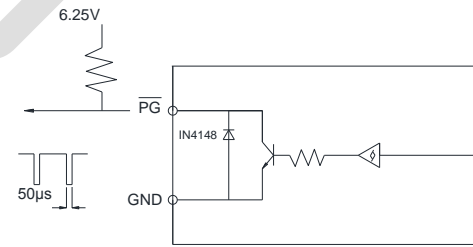
PG

OC (30V/10mA max)

3K ~10K

3\*N, N

**2**  
 +6.25V  
 1.0  
 3  
 SV GND, SV  
 SV 2K ~5K R-SV  
 SV 0~1.0  
 R-SV 0~5V



**ALM**

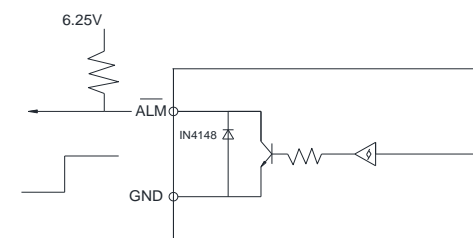
ALM

OC (30V/10mA max)

3K ~10K

GND

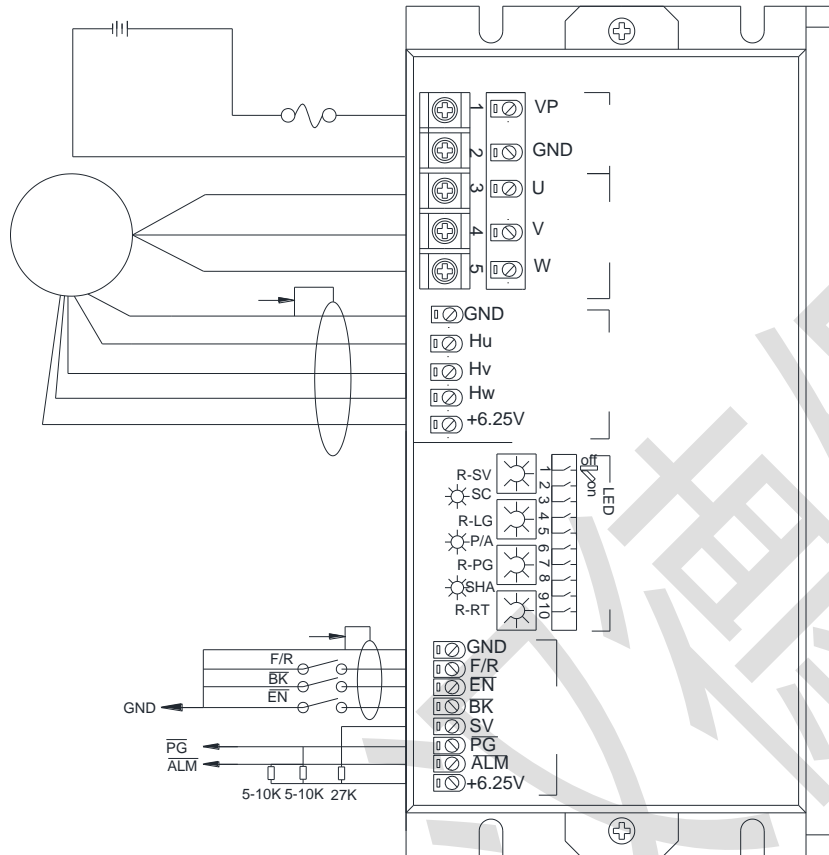
**4**  
 SV GND  
 PWM  
 R-SV 1.0 SV  
 1.0 SV  
 5V 1KHz~2KHz  
 0~1.0 R-SV



DBL-3650H

4

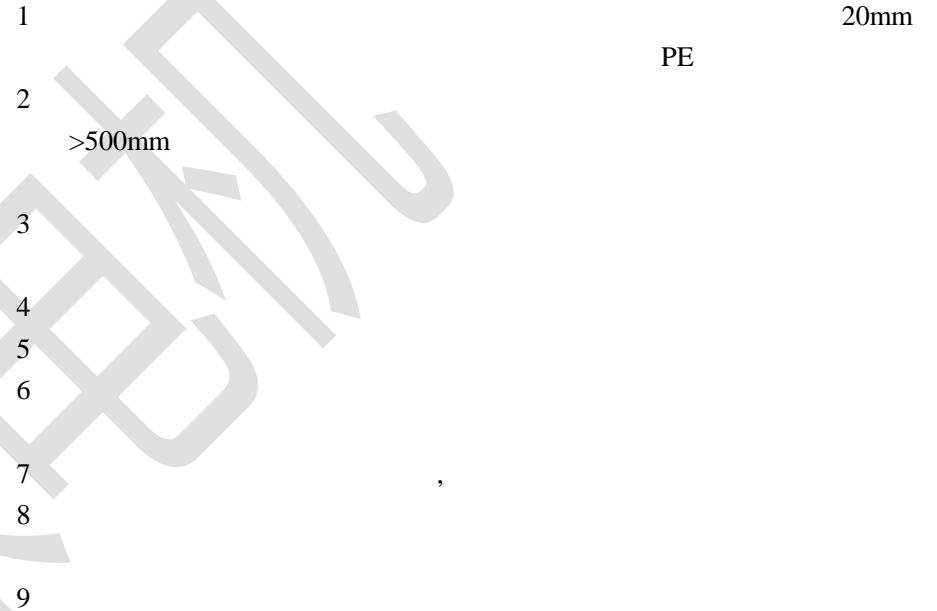
SW1 60 /120 SW2 / SW3,4  
 / SW5 SW6  
 SW7,8,9,10



		SW7	SW8	SW9	SW10
5336 /N	rpm	ON	ON	OFF	OFF
5648 /N	rpm	ON	ON	ON	OFF
7112 /N	rpm	OFF	ON	OFF	OFF
7528 /N	rpm	OFF	ON	ON	OFF
10664 /N	rpm	ON	OFF	OFF	OFF
11296 /N	rpm	ON	OFF	ON	OFF
19200 /N	rpm	ON	ON	OFF	ON
21336 /N	rpm	OFF	OFF	OFF	OFF



SW1	120 deg/e Hall	ON
	60 deg/e Hall	OFF
SW2	Open-loop	ON
	Close-loop	OFF
SW3/4	Speed-loop on	ON/OFF
	Current-loop on	OFF/ON
SW5	Filter time +	ON
	Filter time -	OFF
SW6	Ramp time 1~10s	ON
	Ramp time 0.1~1s	OFF



R-SV      SV      , R-LG      , R-PC  
, R-RT

R-SV	SV ratio 0~1.0
R-LG	Loop gain 2~22
R-PC	Peak current ratio 0.5~1.0
R-RT	SV ramp time 1~10x by SW6

