



CSH-2242R

标准型高压三相步进驱动器

用户手册

以匠心质造，驱动民族工业

■ 技术源自德国
■ 驱动民族工业



版权所有 不得翻印

【使用前请仔细阅读本手册，以免损坏驱动器】

CSH-2242R

1.8

3A

0 3A 3A 0

10 2000 /
0.3A 3A

110V~245VAC



SW9

SW9 ON

CW/CCW

SW9 OFF

PUL/DIR

CSH-2242R(110V~245VAC)

20%

SW10

100W

120W

40%

100W

140W

P1:SW1~SW4

SW1~SW4

16

1.2A~4.2A



(PUL)/

(DIR)/

(ENA) 5V/24VDC

P1:SW5~SW8

SW5~SW8

16

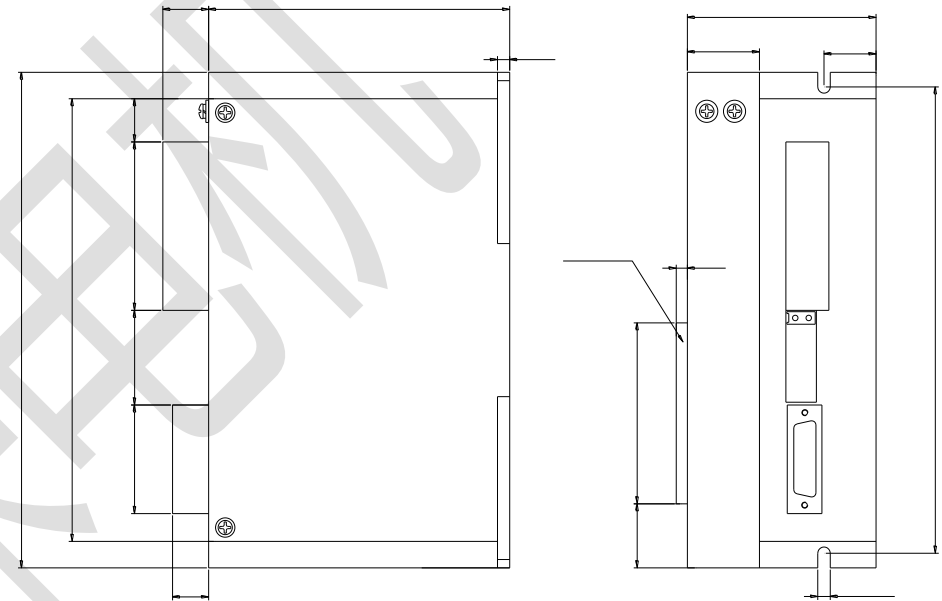
400~60000 /



文德

	110	220	245	VAC
	1.2	-	4.2	A
	2	-	200K	Hz
	250	-	-	ns
	62.5	-	-	
	5	-	24	VDC
	7	10	16	mA
	-	110	-	VAC
	-	245	-	VAC

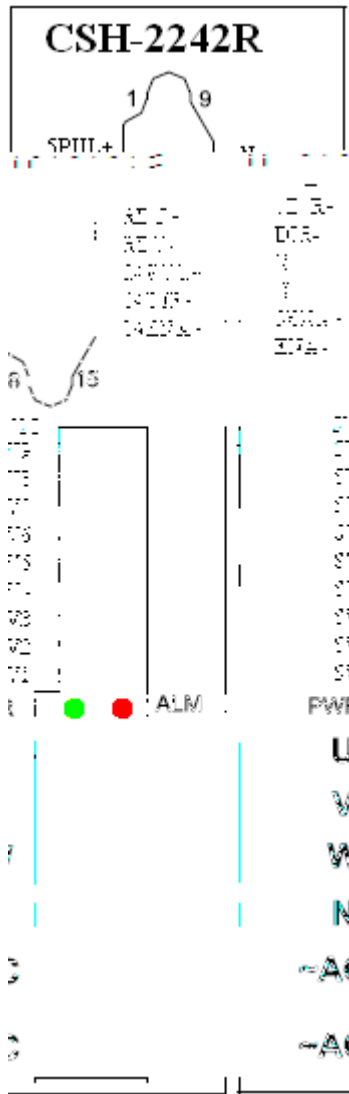
		0 ~40
		40 ~ 90%RH
		5.9 m/s ² Max
	-10	+70
	0.88Kg	



1
2

60

80



1

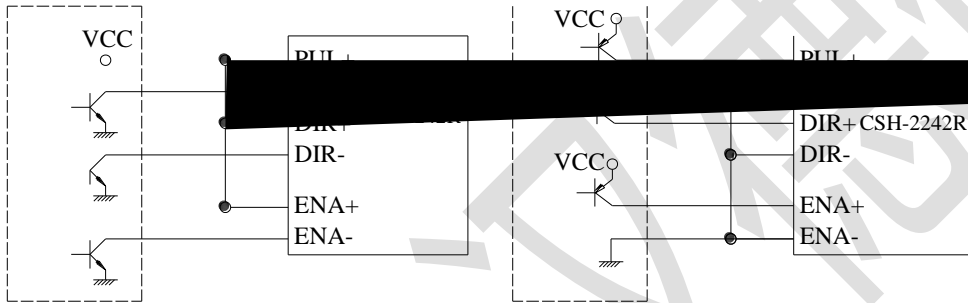
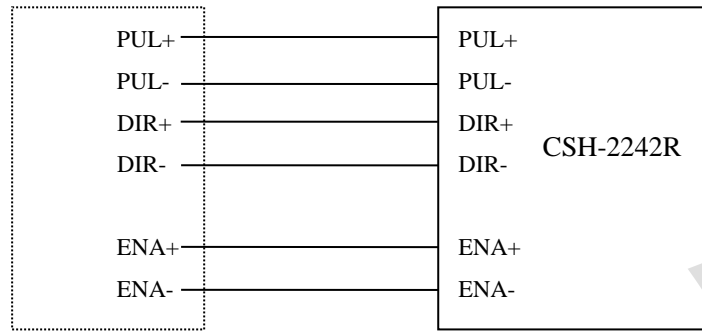
1	U	U	U/V/W	N
2	V	V		
3	W	W		
4	N			
5	~AC		<u>110~245VAC</u>	
6	~AC		<u>110~245VAC</u>	

2

1	5PUL	5V	<u>DC5V</u>	
2	PUL		<u>DC5~24V</u>	
3	5DIR	5V	<u>DC5V</u>	
4	DIR		<u>DC5~24V</u>	
7	5ENA	5V	<u>DC5V</u>	
8	ENA			
11	RDY		<u>DC5~24V</u>	
12	RDY			
13	24PUL	24V	<u>DC24V</u>	
14	24DIR	24V	<u>DC24V</u>	
15	24ENA	24V	<u>DC24V</u>	

5 6 9 10 **N**

1)



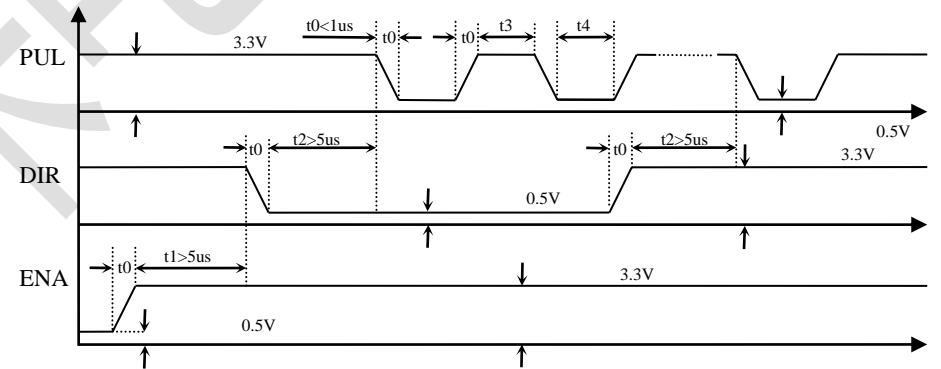
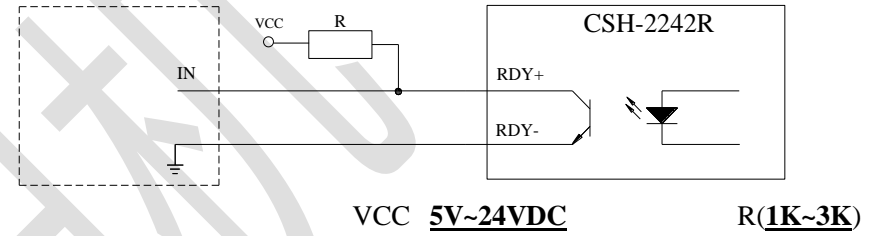
5V/24VDC

RDY

OC

30VDC,

100mA.



1	t1	ENA	DIR	—
		ENA+	ENA-	
2	t2	DIR	PUL	—
3	t3	PUL()		—
4	t4			—
5	t0			<u>1us</u>

CSH-2242R

ON/OFF

1

SW1~SW4

CSH-2242R

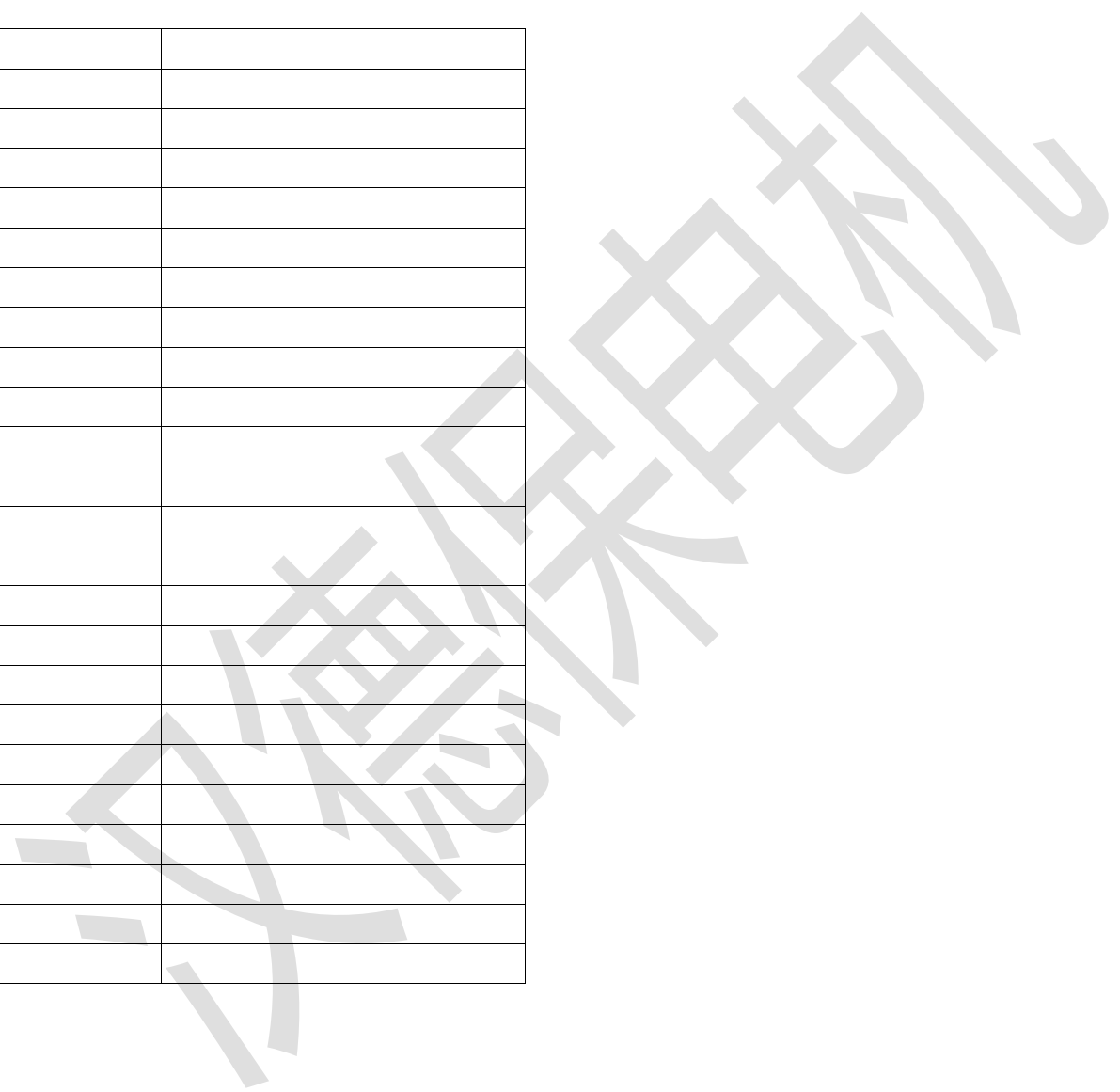
SW1~SW4

16

A	SW1	SW2	SW3	SW4
1.2	OFF	OFF	OFF	OFF
1.4	OFF			



1			
2			
3			
4			
5			
6			



4 质量保证

[http:// www.hardboy.net](http://www.hardboy.net)

汉德保电机